

VANK

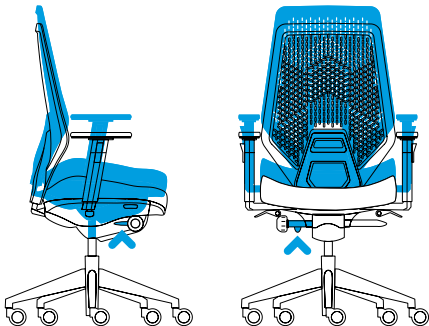
V6

USER
GUIDE

THANK
YOU

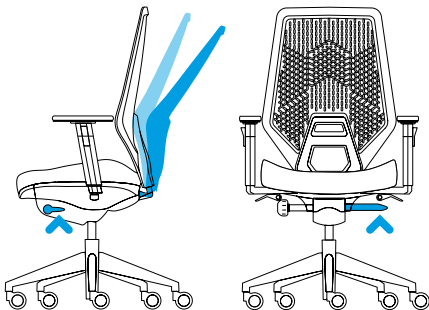
VANK_V6 SWIVEL CHAIR IS A SUM OF OUR YEARS OF EXPERIENCE WORKING ON ERGONOMIC SOLUTIONS. IT OFFERS OPTIMAL FEATURES FOR ACTIVE AND DYNAMIC SEATING, AND SUPPORTS MAINTAINING THE RIGHT POSTURE. WITH ITS FORM REFERRING TO A SPORTS CAR LINE, THE CHAIR HAS BEEN DESIGNED AS THE DRIVING FORCE BEHIND WORK.

WE HOPE YOU HAVE A GREAT EXPERIENCE USING YOUR **VANK_V6**.



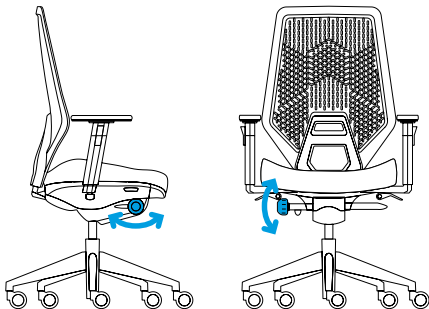
SEATING HEIGHT ADJUSTMENT

LIFT THE LEVER PLACED ON THE RIGHT SIDE BELOW THE SEAT BEHIND THE ROUND KNOB AND SET THE DESIRED SEATING HEIGHT.



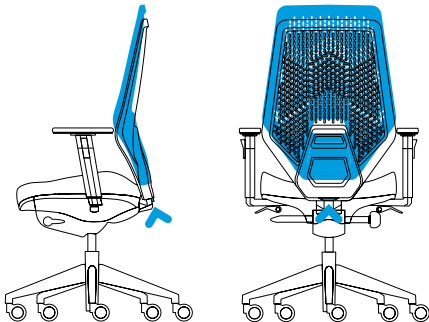
ADJUSTING AND LOCKING THE BACKREST INCLINATION ANGLE

LIFT THE LEVER PLACED ON THE LEFT SIDE BELOW THE SEAT AND PUSH THE BACKREST WITH YOUR BACK. RELEASING THE LEVER WILL MAKE IT POSSIBLE TO CHANGE THE INCLINATION ANGLE OF THE BACKREST WITH RESPECT TO THE SEAT IN A SYNCHRONOUS MANNER. LOWERING THE LEVER WILL MAKE IT POSSIBLE TO LOCK THE BACKREST IN THE DESIRED POSITION.



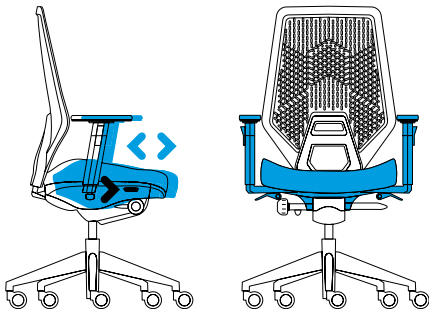
BACKREST PRESSURE ADJUSTMENT

USE THE KNOB ON THE RIGHT SIDE TO ADJUST THE BACKREST PRESSURE AND THE OVERALL CHAIR DYNAMICS TO YOUR BODY WEIGHT. YOU CAN PULL THE KNOB OUTWARDS TO MAKE IT EASIER TO REACH IT.



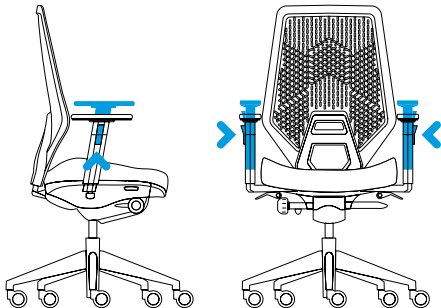
BACKREST HEIGHT ADJUSTMENT

PRESS AND HOLD THE BUTTON LOCATED CENTRALLY AT THE BOTTOM OF THE BACK OF THE BACKREST AND SET THE DESIRED BACKREST HEIGHT. MAKE SURE TO SET THE BACKREST SO THAT IT OFFERS PROPER SUPPORT FOR THE LUMBAR REGION.



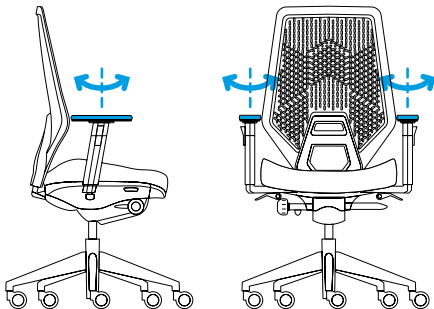
SEATING DEPTH ADJUSTMENT

IN ORDER TO ADJUST THE SEATING DEPTH TO YOUR INDIVIDUAL PREFERENCES AND TO ENSURE A BETTER SUPPORT FOR YOUR THIGHS, PRESS THE BUTTON LOCATED ON THE RIGHT SIDE UNDER THE SEAT AND MOVE THE SEAT FORWARD OR BACKWARD WITH RESPECT TO THE BACKREST.



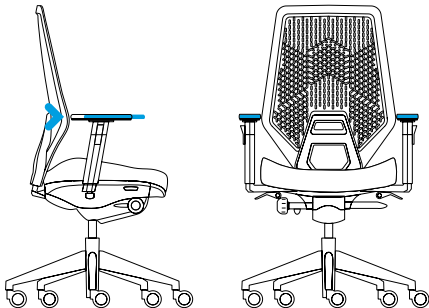
ARMRESTS: HEIGHT ADJUSTMENT

PRESS THE BUTTONS FOUND ON THE OUTER SIDE OF THE ARMRESTS AND SET THE ARMRESTS AT THE DESIRED HEIGHT.



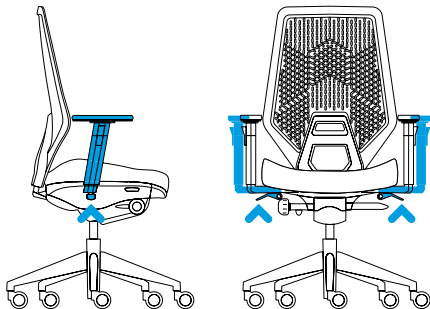
ARMRESTS: ANGLE ADJUSTMENT

MOVE THE UPPER PART OF THE ARMRESTS WITH RESPECT TO THE CHAIR AND SET THE DESIRED ANGLE.



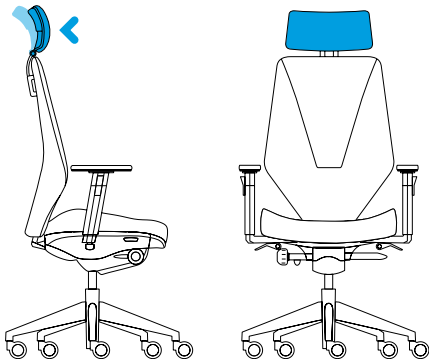
ARMRESTS: DEPTH ADJUSTMENT

SLIDE THE UPPER PART OF THE ARMRESTS FORWARD OR BACKWARD HORIZONTALLY WITH RESPECT TO THE ARMREST AND SET THE DESIRED DEPTH.



ARMRESTS: WIDTH ADJUSTMENT

IN ORDER TO CHANGE THE SPACING BETWEEN THE ARMRESTS, LOWER THE LEVERS FIXING THE ARMRESTS ON BOTH SIDES UNDER THE SEAT, SET THE SPACING AS DESIRED AND RESTORE THE LEVERS TO THEIR INITIAL POSITION.



HEADREST ADJUSTMENT*

PUSH THE HEADREST AND SET THE RIGHT ANGLE

*IN SELECTED SEAT MODELS

NOTICE

PLEASE USE THE CHAIR AS INTENDED AND WITH DUE CARE. IF THE CHAIR IS USED NOT AS INTENDED, E.G. IF SOMEBODY STANDS ON THE SEAT OR SITS ON THE ARMRESTS, IT MAY LEAD TO AN ACCIDENT. MODIFICATIONS AND STRUCTURAL ALTERATIONS INTRODUCED WITHOUT THE KNOWLEDGE AND AGAINST THE INSTRUCTIONS OF THE MANUFACTURER MAKE THE WARRANTY INVALID. THE MANUFACTURER BEARS NO LIABILITY FOR ANY CHAIR DEFECTS CAUSED BY INAPPROPRIATE USE OF THE CHAIR, SOILING/STAINING, MECHANICAL/THERMAL/CHEMICAL DAMAGE OR ANY OTHER DAMAGE CAUSED BY THIRD PARTIES OR FORCE MAJEURE. ANY REPAIRS MAY BE PERFORMED BY QUALIFIED STAFF ONLY.

MAINTENANCE

CHAIRS NEED TO BE CLEANED ON A REGULAR BASIS AND KEPT AWAY FROM DIRECT EXPOSURE TO WATER.

METAL ELEMENTS SHOULD BE WIPE USING A SOFT DRY CLOTH. IT IS NOT PERMITTED TO PERFORM MAINTENANCE OF PLASTIC ELEMENTS USING SOLVENTS. UPHOLSTERIES SHOULD BE WIPE SYSTEMATICALLY USING A SLIGHTLY WET AND SOFT CLOTH, OR SPECIAL SENSITIVE UPHOLSTERY CLEANING AGENTS. LEATHER UPHOLSTERY NEEDS TO BE MAINTAINED ON A REGULAR BASIS USING SPECIAL CONDITIONING AGENTS FOR LEATHER.

IN ORDER TO MAINTAIN CASTORS (WHEELS) IN GOOD WORKING ORDER, IT IS NECESSARY TO WIPE THEIR SURFACE WITH A SLIGHTLY WET CLOTH TO REMOVE ANY GRAINS OF SAND, DUST, ETC.

VANK CARES ABOUT THE QUALITY, THE CONDITIONS,
AND THE SAFETY OF WORK, WHICH IS REFLECTED IN THE
IMPLEMENTATION AND APPLICATION OF AN INTEGRATED
MANAGEMENT SYSTEM ACCORDING TO ISO 9001:2008, ISO
14001:2004, PN-N-18001: 2004 AND BS OHSAS 18001 : 2007

VANK_V6 IS COMPLIANT WITH THE RELEVANT REQUIREMENTS
IN THE SCOPE OF SAFETY ACCORDING TO
PN-EN 1335-1:2004, PN-EN 1335-2:2009, PN-EN 1335-3:2009,
PN-EN 1022:2007

VANK
ŁOWĘCIN, UL. SARBINOWSKA 11
PL-62-020 SWARZĘDZ

www.vank.pl
export@vank.pl
serwis@vank.pl